



Building Design



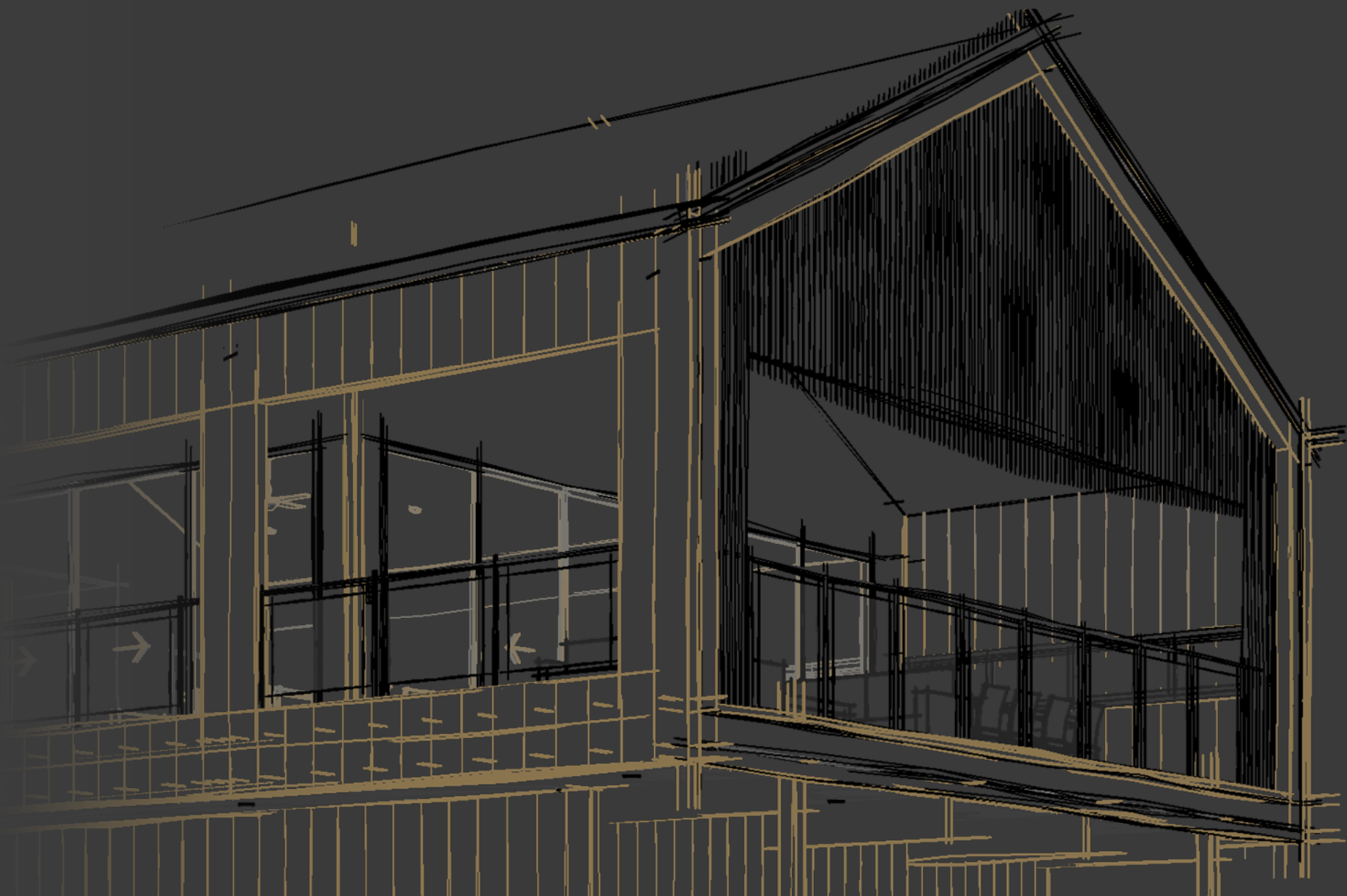
Capabilities Portfolio
www.hauswerk.com.au



www.hauswerk.com.au

Your local designers!

Table of
Contents



1. Welcome:
 - Meet Our Director
 - About Us

2. Services & Capabilities
 - 2.1. New Project Design
 - 2.2. Renovations
 - 2.3. Marketing Material
 - 2.4. Commercial & Entertainment
 - 2.5. Industry Connections

3. Contact Us

Arches, Airlie Beach QLD
Overlooking Pioneer Bay



Welcome

Past Projects

- Elysian, Broadbeach
- Daydream Island
- South Molle Island
- University Sunshine Coast
- Queens Wharf, Brisbane
- Circuit Italia, Newcastle
- Brisbane Auto-mall
- Reading Cinemas
- Kangaroo Point Precinct
- Kangaroo Point Tower
- ViVid Festival, Sydney
- Arches, Airlie Beach
- Seascape, Airlie Beach
- Villa Vista, Bloomsbury
- Mt Vista Estate
- Mandara Rise Estate
- And many more

Qualifications

- Master of Architecture - Bond University
- Bachelor of Architectural studies – Bond University
- Diploma of Project Management – GCIT
- Certificate 3: Engineering - Heavy metal fabrication & boiler-making - MSIT
- Certificate 1: Construction - FSCC

Awards

- Vice Chancellor's list of academic excellence: Masters of Architecture
- Highest overall grade: Architecture Design Studio
- Highest overall grade: Design Communication
- Nominated for Queensland apprentice of the year 2008
- Construction student of the year: 2005, 2006, 2007
- Engineering student of the year: 2006, 2007

Meet Our Director



Matthew Brabeck
Director & Lead Designer

About Us

Our company started in 2017 in the digital domain, creating marketing material while director Matthew Brabeck was involved in projects at other Architecture firms, with some listed on the previous page. In 2018 he moved to the Whitsundays as part of the project team on the Daydream Island rebuild. Afterwards, we started working on projects in the local Whitsundays community designing for local builders on new homes and large renovations which progressed into developments of all sizes.

Ethical practices create true design solutions.

Hauswerk provides design and planning concepts, marketing material, and construction plans to developers and individuals. Our team are motivated to apply practical, honest and intelligent design solutions, taking advantage of advanced CAD design tools to aid a personal and easy to understand design experience, with open communication to achieve the best outcome possible. Every project is tailored to suit the design, marketing, privacy and timeline requirements.

No matter the project scope, we take pride in our designs, always ensuring that every aspect and is thoroughly explored, even if it requires a full reconfiguration of the current concept, we will do it because your satisfaction with the outcome and the design fundamentals matter.

We are QBCC licensed for 'Open Building Design' which provides the freedom to create any project large or small, commercial or domestic.

We are ready to work with you.

Macarthur House

Designed to maximise ocean views for all bedrooms and living areas from indoors, while featuring a Western facing sunset entertainment balcony.



2

Services & Capabilities

01

New Home Design

New home designs are unique to each project with varying needs including with environmental factors such as the weather, solar angles throughout the year, prevailing winds, views and privacy. Our designs are 'future proofed'. This means we consider future uses and additions to every project based on location and client input. Interior design services are also available.

03

Marketing Materials

Graphic design, plans, masterplans, sketching, brochures, video fly-through, CAD file editing & conversion, 3D modelling & rendering from 2D drawings and site measurements, 3D modelling.

02

Renovations

We create efficient solutions for renovation works no matter your requirements. We aim to reduce unnecessary costs if it is in the best interest of the client and work towards achieving high quality resolution for your home or project. Renovations can range from a large rebuild changing roofs and building footprint to subtle extensions.

04

Commercial & Entertainment

Commercial projects in hospitality, tourism and entertainment are available with experience in projects such as Daydream Island, Ballistic Beer Co. Mackay, Circuit Italia NSW, and Villa Vista which is a mix of residential and commercial use.

We provide a range of services from private residential work such as new home design or renovations of existing spaces, to projects within to Commercial and Entertainment industry,

Additionally, we provide design concepts and marketing material for all projects of all sizes and at all phases. This material is included with our design work in the form of life-like 3D renders and brochures.



New Project Design

2.1

We strive to build close relationships with homeowners and developers to create their dream homes and achieve their investments goals.

Developments

Some developers have required design concepts for house and land packages which are provided with brochures, artistic masterplans, and life-like 3D images. Many landowners have engaged us to create their homes and multi-residential projects within new and existing housing estates such as Mandara Rise Cannonvale, Seascape Airlie Beach, and Mount Vista Estate Bloomsbury.

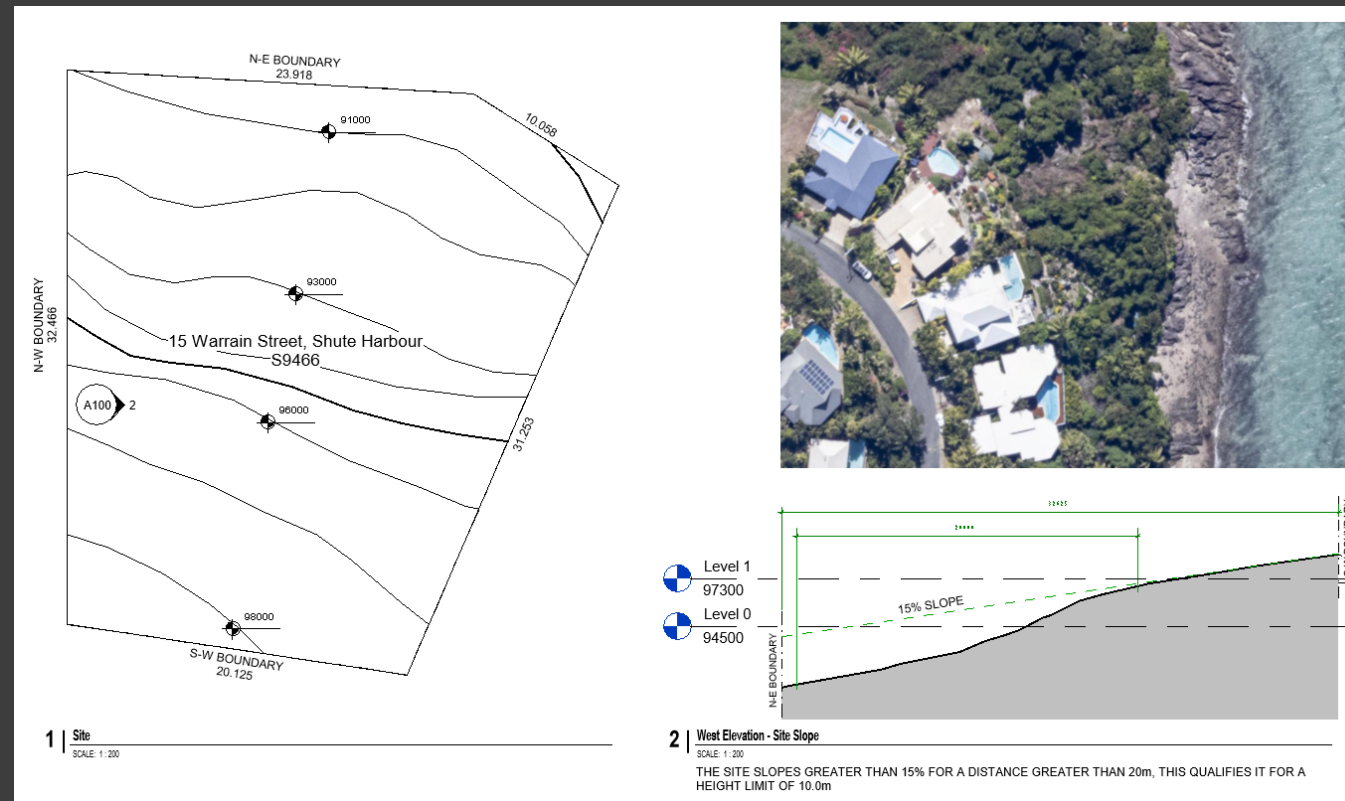


Mt. Vista development, Bloomsbury QLD



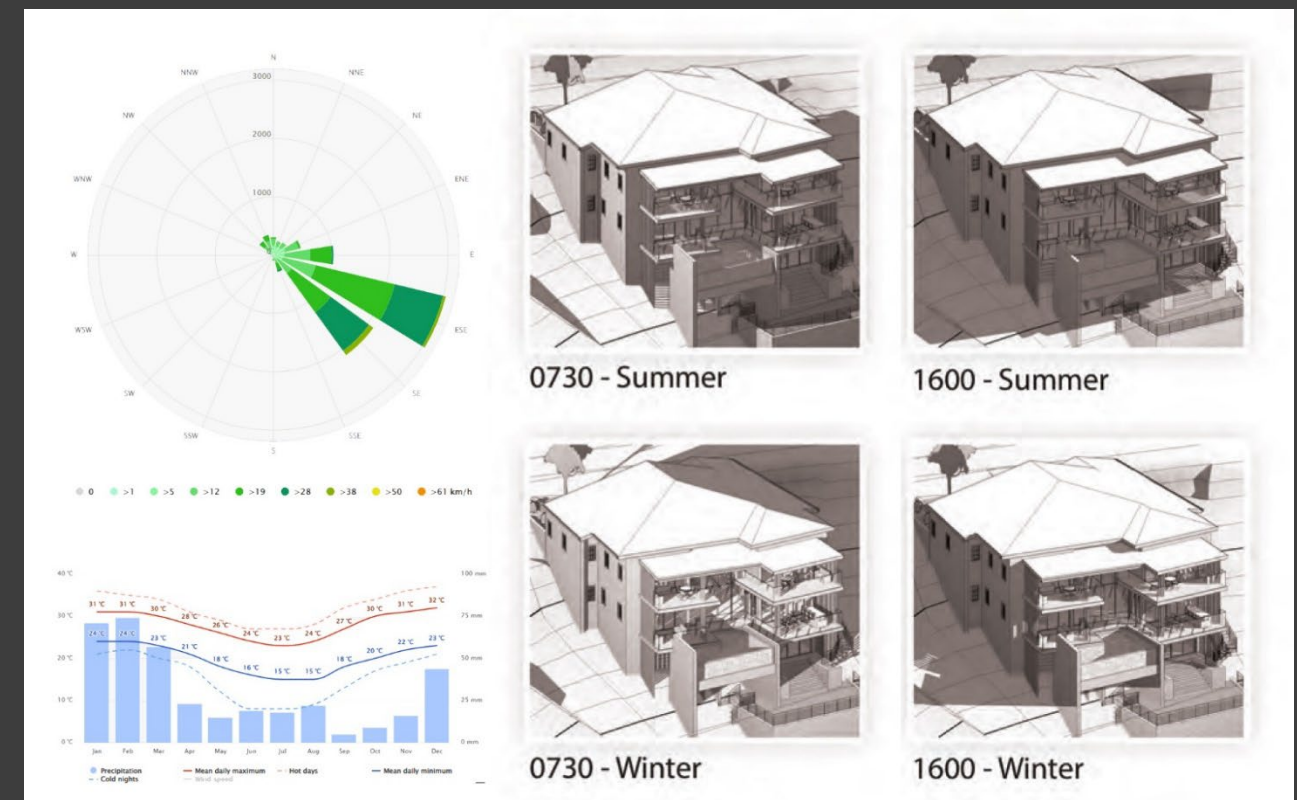
Step 1: Site analysis

Every project undergoes a comprehensive site analysis. This informs us about the potential views, privacy from other buildings, sun angles, prevailing winds, site access, typography slope which will dictate height limits, boundary setbacks, and zoning. This allows us to develop an informed building envelope and design scope.



Step 2: Environment

As shown in this image, the environment plays an important factor when designing any structure. Solar penetration into the building can be controlled by its form throughout the year. For example, we could allow warming in the colder months and reduce heat in the warmer months using the different Azimuth and Altitude. This strategy helps to improve the energy rating and occupant comfort.



Step 3: Planning

After our site analysis, we develop the floor plan which we value as the most important step in the design process. Another aspect of our process is taking advantage of view corridors and balancing them with privacy, sun shading, cross ventilation and excessive wind protection. Material, appliance and fixture schedules are also supplied if requested.



Seascape Master Plan



Master Planning & Multi-Residential

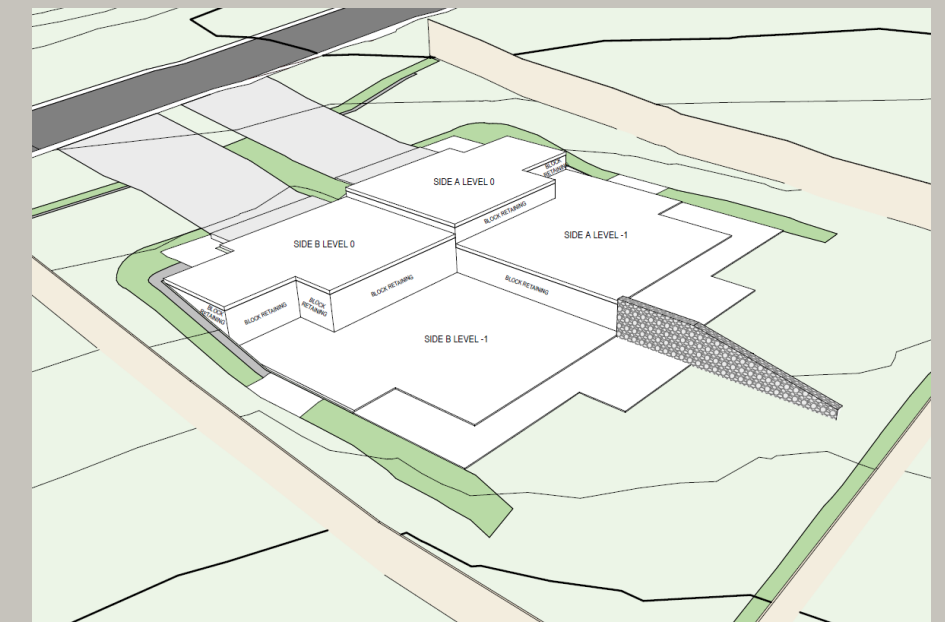
Multi-residential projects range from duplexes to strata title detached dwellings. Conducting our site analysis can inform developers what can fit onto each individual site or development plot without impeding the quality of lifestyle each dwelling or public building can provide. This helps inform the design scope and budgets and allows informed communication with civil engineers, certifiers and other external consultants to begin.

Mandara Rise Duplex



Multi-Residential

This Duplex project has challenging site conditions. It is situated on 4 individual lots. Working with the developer and local certifiers, we determined that the site was best to remain 4 separate lots, rather than combine them all with a central access easement road. This was due to infrastructure setback requirements and planning an efficient construction budget.



The final floor plan which is divided into 4 plates that can undulate independently, allowed the building to be placed on 4 sites with differing terrain while maintain the same lower floor plan, upper level and a very similar external envelope. This made it easier to plan, budget and communicate with external consultants and builders.

Twin Wings, Airlie Beach QLD



Bespoke Homes

'Twin Wings' name is reference to its 'V shaped' floor plan, dividing the house into two halves. This creates visual and acoustic privacy for the bedrooms and a grand central double height space upon entry which cascades down into the living areas, alfresco and pool. The home is designed to sit within the sloped landscape, not up on columns like most of the homes in the area. This gives the occupants a sense of being grounded with access to the land and an external raised garden with a firepit, raising the appeal of the home. Being accessed from the top level, the home adopts a humble street presence, which allows it to slowly reveal its features in stages, not all at once, as you enter the home and explore further. This creates a timeless, high-quality living and holiday experience.

Villa Vista, Bloomsbury QLD



Mixed-Use & Luxury Homes

With a design referencing the surrounding cascading rocks and hills, Villa Vista sits atop Mount Vista in Bloomsbury with 360° views overlooking the Whitsunday Islands, Midge Point, Swizet Creek, the local airfield, and Coastlines North to South. The plan consists of an E-W corridor, connecting the house, viewing the sunrise and sunset between the pod-like rooms.



The house has 3 stages of construction from a 4-bedroom private residence, expanding to a 16-room events venue. This is part of our 'future proofing' ethos.



Renovations

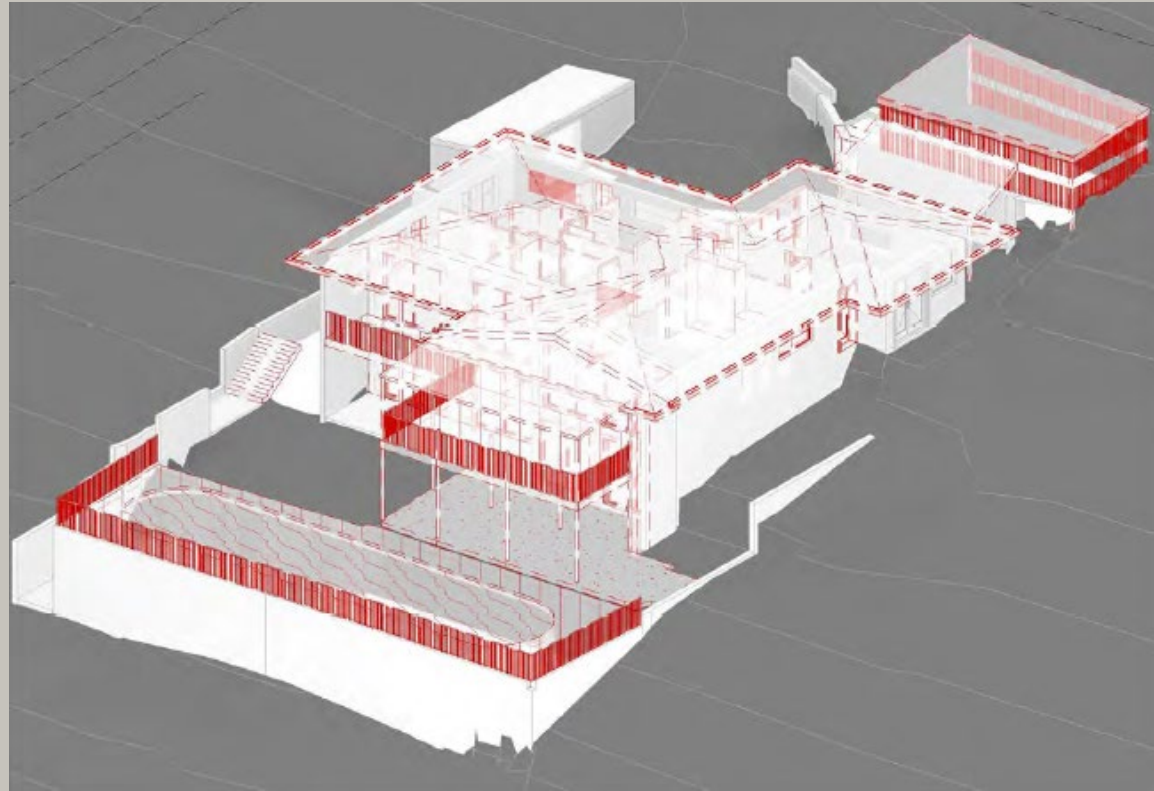
2.2

Bringing new life and comfort into existing homes and buildings through respectful renovation is a rewarding experience, enriching our community.

A Personal Experience

We strive to create a personalized design approach including our clients throughout the design process with regular communication. First, we establish a budget and detailed brief and fill in the blanks where some advice is desired, exploring the full potential of the project and providing advice based on our experience.



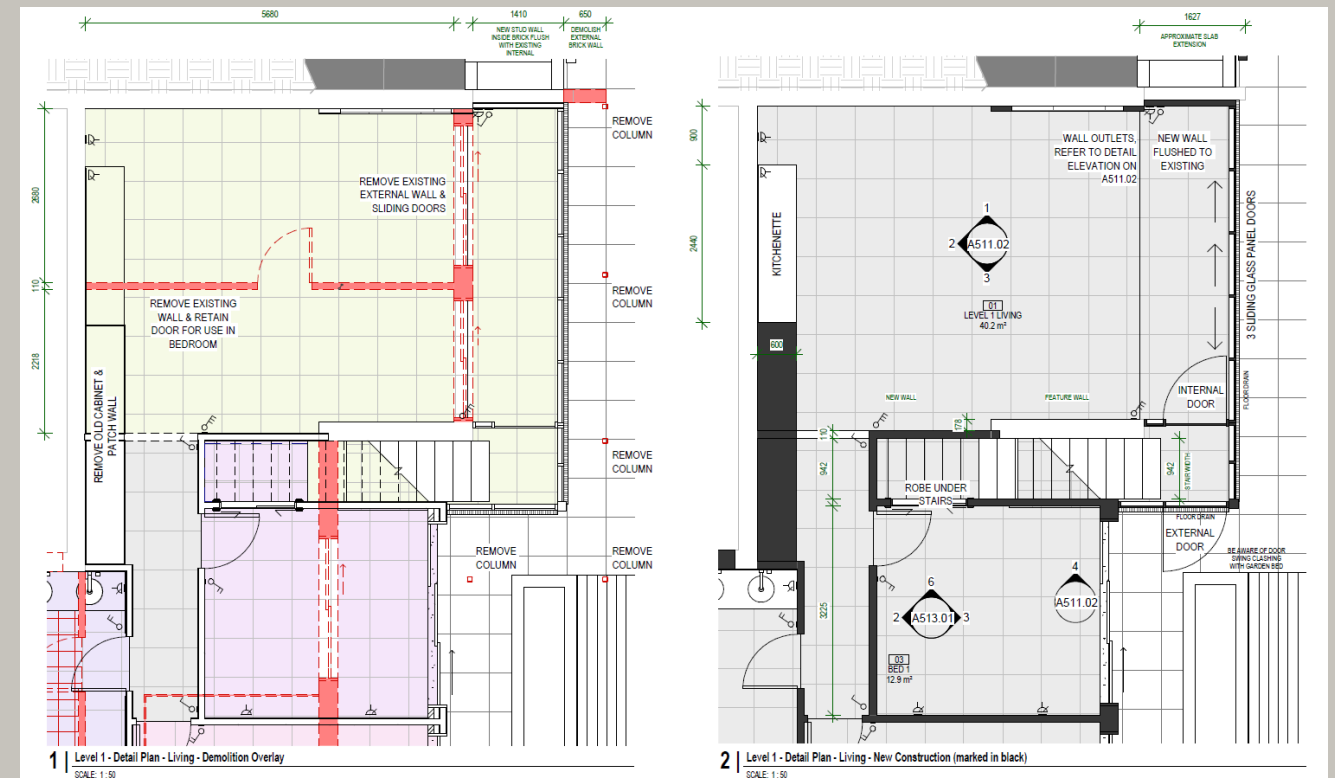


Step 1: Scope, Site Measure

Some renovations are subtle, while others are extensive. We have experience in both. Site surveys are an important part of extensive renovations along with site measuring the finer details of a building such as window and door locations, cabinets, internal floor plans, external features and many other items. This process aids in creating a cost-effective design that complies with current construction code regulations.

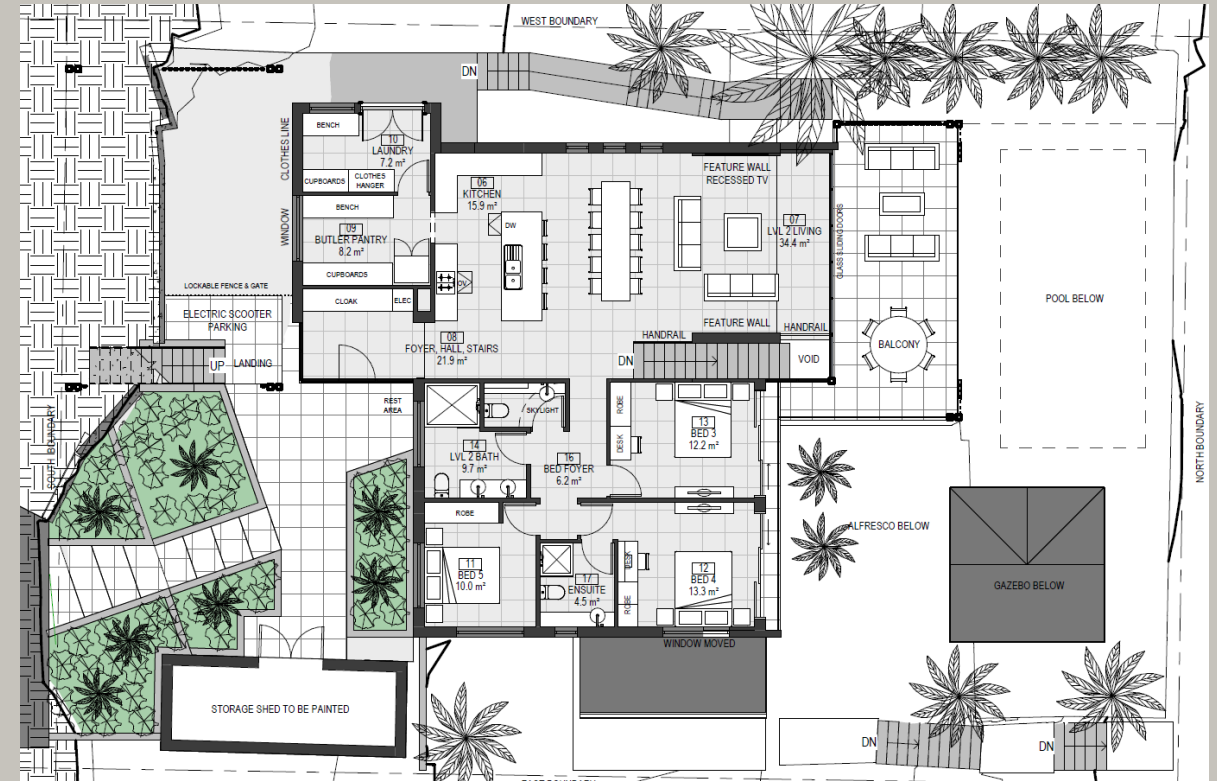
Step 2: Plan & Documentation

Survey plans and site measurements are combined to create accurate construction drawings for contractors to reference and quote from. We can supply a simplified drawing set along with the detailed construction drawings for owners to see their final product more concisely. We provide 3D views of rooms to communicate design intent and context, along with life-like 3D images if requested.



Step 3: Client Presentation & Plans

Once most of the behind-the-scenes work has been resolved, we then create easy to understand set of floor plans and views to accompany the detailed set of construction drawings, so clients and other consultants can review the project efficiently without being lost in the details. For example, this renovation required 62 pages of detailed demolition plans, images, 3D views and construction drawings.



Step 4: Marketing Material

Whether the project is a personal home, a future short-stay accommodation venue or a commercial project, we then finalise the marketing material in the form of edited floor plans, renders and brochures if requested. We ensure the materials illustrated are available to the project's location. Often, the life-like renders created during step 3 to better communicate the design progress and ideas with the owners and are later updated upon design completion.

Yacht Harbour Tower, Hamilton Island



Apartment Renovations

This Hamilton Island apartment renovation is within the Yacht Harbour Tower. We redesigned the floor plan as the existing apartment had functional flaws including a repositioned kitchen, bedroom, ensuite, and main bathroom. We also redesigned the master ensuite and robe for improved function and humidity mitigation. We were tasked with creating a nautical theme which we subtly implemented through round port hole like mirrors and furniture, feature wall timber decking, feature colours and materials that reference the surrounding sands, forests, aqua waters and reef.



Arches, Airlie Beach



House Renovations

Perched on a hill in Airlie Beach overlooking Pioneer Bay, Arches is an extensive holiday home renovation. The envelope was originally kept within itself aside from extending the lounge and balcony towards the ocean. The owner later decided to extend the entire rear of the house to provide spacious bedrooms. The feature arches have two radiuses and are specifically designed to control sun shading while not obstructing the view of the ocean too greatly. The shape provides a modern take on the arch, creating a timeless home. The 3D demolition image for this project can be seen at the start of this 2.2 section.

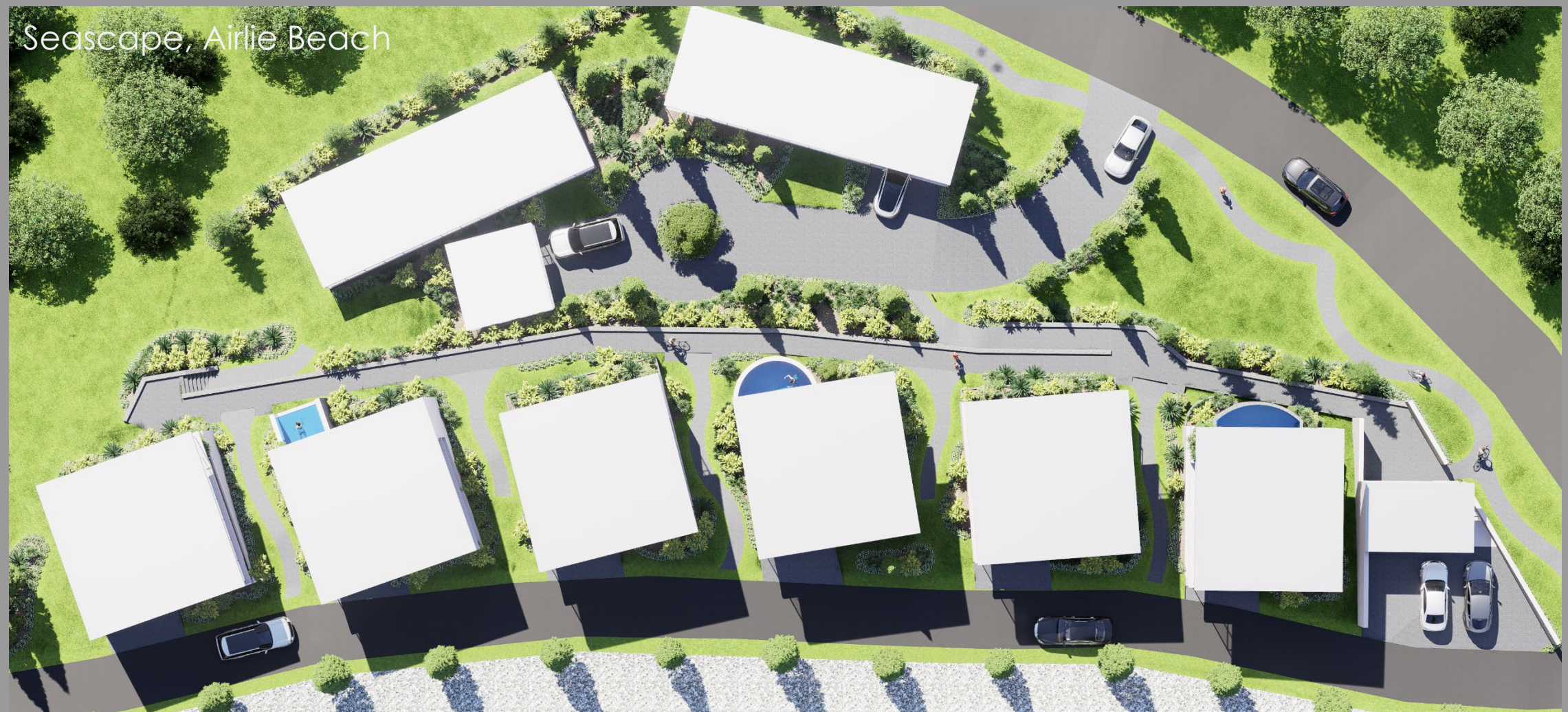


Marketing Materials

- Brochures
- Floor Plans
- Video Fly-throughs & Editing
- Realistic Renders
- Master Plans

Marketing material services are available for existing and new projects from graphic design to video fly-through animations. Various styles and design examples are shown below. Realistic renders are usually included with every Hauswerk design project.

2.3



Brochures & Plans

Brochures are useful for printed marketing promotions and can be included with every design. We also offer brochure creation for existing projects. Information such as floor plans, orientation, materials, and light studies are included to further showcase project development.

Orientation & material considerations

Placing materials on specific surfaces allows indirect light into the building without the need for direct sunlight. For example, using a material such as timber decking or stone tiles on the balconies can reduce sunlight reflection into the building. The pool is positioned with this in mind to reflect warmer afternoon sun to the East, away from the living level.



Materiality.

03 Floor Plan - Level 3 'Entry'

The street entry level includes 3 bedroom, 2 bathrooms, a double garage, entry foyer, & double height space down to the living areas, pool, and ocean view. The view connection allows easy communication with people at the door whilst maintaining living level privacy through carefully considered floor & wall geometry.



02 Floor Plan - Level 2 'Living'

The living level includes an enclosed cinema, VR gaming room, lounge, kitchen, dining room, outdoor lounge, outdoor teppanyaki grill, infinity edge pool with spa, bathroom, and laundry. Shading & privacy is provided in the morning and afternoon from the external vertical columns, walls & balcony geometry, and pool walls.



01 Floor Plan - Level 1 'Office'

The lower level includes acts as an office retreat and cyclone bunker including a cellar, office space & conference space, lounge, landscaped outdoor entertainment with seating steps, a bathroom, food storage, garden storage and pool maintenance access. The garden storage includes a generator and a water storage tank in the event of a cyclone.



3D Solar analysis & geometry

As illustrated, sunlight will penetrate the outdoor areas and kitchen in the morning during the winter months. This helps people warm up and feel refreshed in the sunlight during colder months. This will not happen in the afternoon. The home has been designed specifically for this to be reduced during the summer months as illustrated below.

During Spring and Autumn, there will be adequate solar shading on the outdoor entertainment areas throughout the day thanks to the balconies and vertical structure shading. If any further shading is desired, this can be achieved with roll down blinds from the level 3 balconies.

The outdoor entertainment areas will be fully shaded all day during summer months with the aid of the balconies and side structural screens. The furniture on the lower deck and spa is generally shaded by the balconies above and the roof.



0730 - Summer



1200 - Summer



1600 - Summer



0730 - Winter



1200 - Winter



1600 - Winter



'A home crafted to sit gracefully within its cascading environment.'

'Twin Wings' is a home designed to appreciate the natural environment around them, ease of family communication, comfort and versatility. Situated in the hills above Airlie Beach, the home gracefully cascades down the sloped landscape, remaining grounded. Advantage is taken of the high ground position in regards not only to views but to privacy & environment factors as well, aided by the judicious sculpting of the walls, balconies, roof, and structure.

'Twin Wings'
Airlie Beach Qld 4802

Environment. Communication. Comfort. Style.

matty@hauswerk.com.au
www.hauswerk.com.au
0449 810 069



Video Fly-throughs & Editing

Hauswerk offers video fly-throughs and editing of existing footage for marketing campaigns and as a design aid.



Realistic Renders

As seen throughout this portfolio, life-like renders are an effective tool for communicating project concepts. We can provide renders with every design, ensuring clarity and confidence in your project. Renders are also available in 360° images which can be put into your media for customers to pan/look around them in 3D.



Commercial & Entertainment

2.4

We have worked on commercial & entertainment projects within the Whitsunday Region and NSW, along with our director's experience working under Architecture firms which included some large-scale public use and residential projects such as 'Elysian Broadbeach'. Built in 2019, Elysian is a 22-story waterfront residential tower which was designed by Kent Pinel and Matthew Brabeck using parametric CAD software to create a unique façade and silhouette. The building also featured an automated car stacking system, the first in QLD, which allows residents to simply park their car on the ground floor and have it slotted away underground, then call upon it to be ready when they are leaving the building.





Daydream Island

While Hauswerk was not directly engaged for the project, Director Matthew Brabeck spent 18 months as part of the project team rebuilding Daydream Island after cyclone Debbie in 2017. His main role was ensuring the construction works were completed as designed, engaging contractors, and designing additional and future items, such as the light-up welcome sign pictured.



Circuit Italia, NSW

Circuit Italia T14 complex: A private motorsport entertainment facility located in Balickera near Newcastle, NSW. We worked with the owner and project manager to achieve a luxurious members facility overlooking the turn 14 hairpin of the race circuit and events paddock. Further details of this project are still confidential.



Local Restaurant

We designed an extension for Airlie Beach local restaurant, Mika. Unfortunately, due to a sale of the building, this wasn't built. The design doubled their floor seating space and increased their street exposure while respecting the tropical surroundings through its design language.



Ballistic Beer Co. Mackay

Ballistic Beer Co. Mackay: A renovation concept of an existing venue in Blue Water Quay in Mackay was set to go ahead until Covid-19 restrictions delayed the move. It included the renovation of the kitchen & bar, internals & externals, site measure, rear extension including a function room and a portable glass sided brewery.

Industry Connections

We work with many suppliers, consultants and builders, providing clients with local knowledge and confidence that projects are designed and implemented to a high quality and within a reasonable time. This is important to us and helps make the process proficient.

2.5



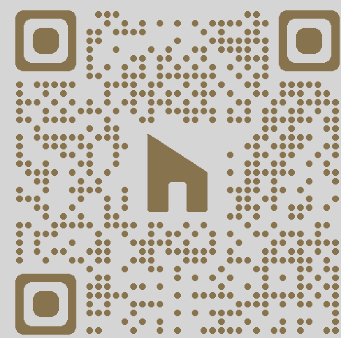
Contact Us

3

Browse our website, call and email our team, or visit us in office for more information about your design project and to join us in building our communities.

We can provide guidance on the design, approvals and build process to help inform your decisions.

We work on projects throughout Queensland from the cape to the Gold Coast.



From the team at Hauswerk,

We look forward to creating with you.



BROWSE:
www.hauswerk.com.au

EMAIL:
info@hauswerk.com.au

CALL:
1300 HAUSWERK
(1300 428793)

VISIT:
1 Commerce Close,
Cannonvale QLD 4802

